

WATER SERVICES ACT 2007 (AS AMENDED) — SECTION 56(16)

**ORDER MADE BY UISCE ÉIREANN UNDER AND PURSUANT TO SECTION 56 (16) OF THE
WATER SERVICES ACT 2007 (AS AMENDED)**

Uisce Éireann, being of the opinion that a serious deficiency of water available for distribution continues to exist and is likely to exist in the Kells / Oldcastle (County Meath), Milford (County Donegal), and Mullingar (County Westmeath) Areas (as shown in the maps in Appendix 1, Appendix 2 and Appendix 3 to this Order) **HEREBY ORDERS** under and pursuant to Section 56(16) of the Water Services Act 2007 (as amended) that, for the specified period set out below and in the areas set out above, the use of water supplied by **Uisce Éireann** for all of the classes of use set in Column 1 below is prohibited for the period of 6 weeks up until Tuesday, 16th of September 2025. Should the prevailing weather conditions and a likely or actual serious deficiency of water available for distribution continue to persist, it may be necessary to further extend this prohibition period for an additional specified period, by way of a further order pursuant to the Water Services Act 2007 (as amended).

COLUMN 1	COLUMN 2
PROHIBITED USE	SPECIFIED PERIOD
Use of water drawn through a hosepipe or similar apparatus for the purpose of – <ul style="list-style-type: none">i. watering a ‘garden’;ii. cleaning a private motor-vehicle using a hosepipeiii. cleaning a private leisure boat using a hosepipeiv. filling or maintaining a domestic swimming or paddling pool (except when using hand-held containers filled directly from a tap)v. filling or maintaining a domestic pond (excluding fishponds) using a hosepipe.vi. filling or maintaining an ornamental fountain (with the exception of such use for commercial purposes).vii. Use of water for filling or replenishing a swimming pool, artificial pond, lake or similar application.	From 23:59 on Monday, 4th August 2025 until 23.59 on Tuesday 16th September 2025

Specified Period: This Order takes effect at 23.59 on Monday, 4th August 2025, and ceases to have effect at 23:59 on Tuesday 16th September subject to the potential necessity for a further period

of prohibition and / or restriction to be extended, depending on prevailing weather conditions. This order may be lifted before the specified period if possible, having regard to the prevailing weather conditions and the availability of water for distribution. Equally, it may be necessary to extend the specified period in time and to other water users, by way of additional order, should the prevailing conditions persist.

A copy of this Order may be seen at **Uisce Éireann's** registered office at Colvill House, 24-26 Talbot Street, Dublin 1 or is available on its website at <https://www.water.ie/>

A PERSON WHO CONTRAVENES THIS ORDER COMMITS AN OFFENCE PURSUANT TO SECTION 56(18) OF THE WATER SERVICES ACT 2007 (AS AMENDED), AND IS LIABLE ON SUMMARY CONVICTION TO A FINE NOT EXCEEDING €5,000.

Dated: 21 July 2025

Signed:



Signed:



Appendix 1 to Uisce Éireann Order dated 21 July 2025

Kells / Oldcastle Regional Water Supply (Lough Bane and River Blackwater)


The areas shown in purple are the areas to which this Order applies

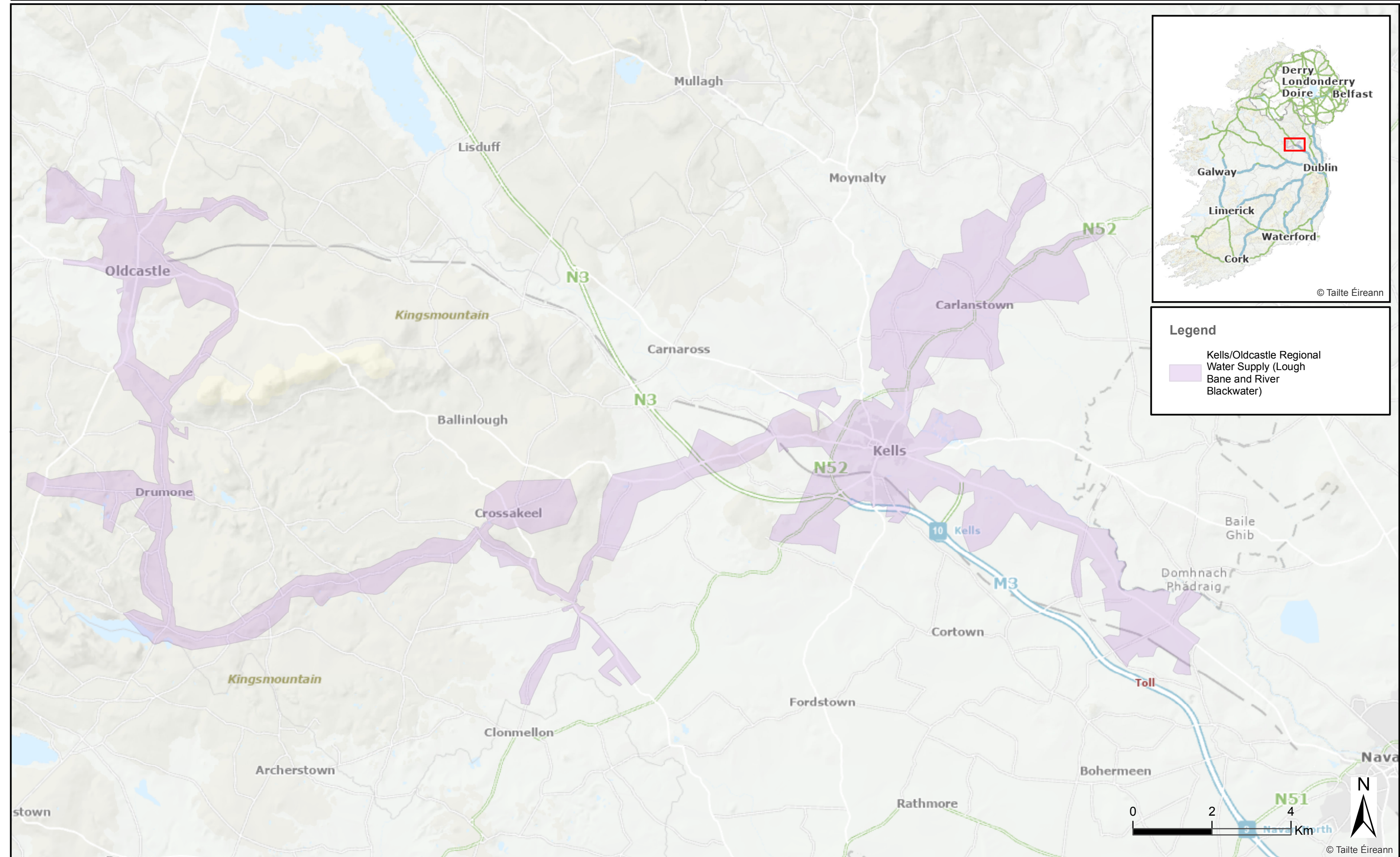
Kells/Oldcastle Regional Water Supply (Lough Bane and River Blackwater)



© Taitte Éireann

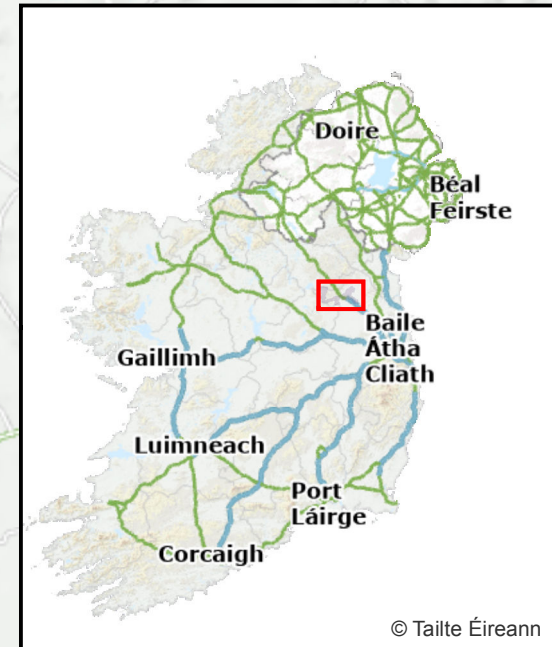
Legend

-  Kells/Oldcastle Regional Water Supply (Lough Bane and River Blackwater)



© Taitte Éireann

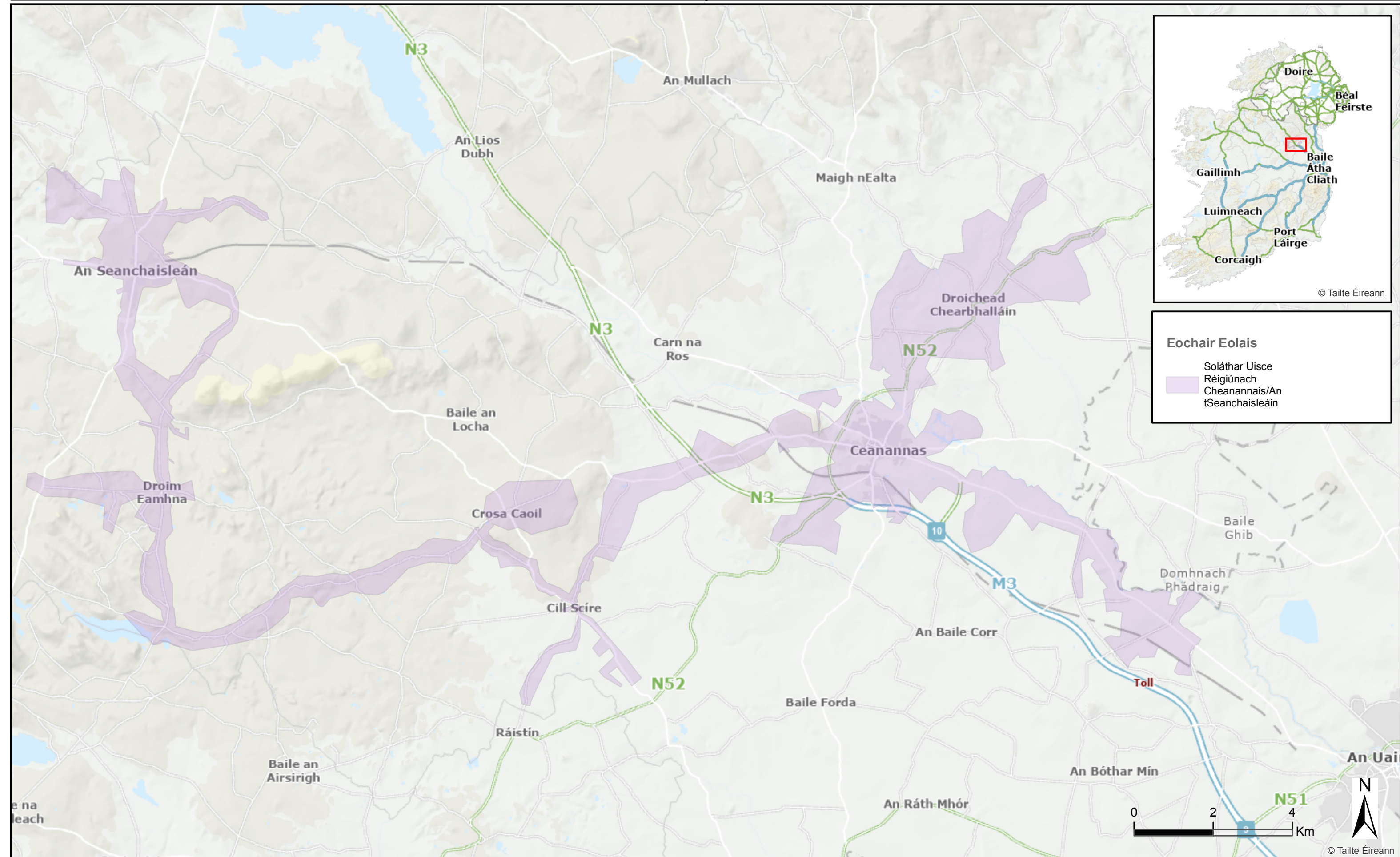
Soláthar Uisce Réigiúnach Ceanannais/An tSeanchaisleáin (Loch Bán agus an Abhainn Dubh)



© Taitte Éireann

Eochair Eolais

- Soláthar Uisce Réigiúnach Ceanannais/An tSeanchaisleáin



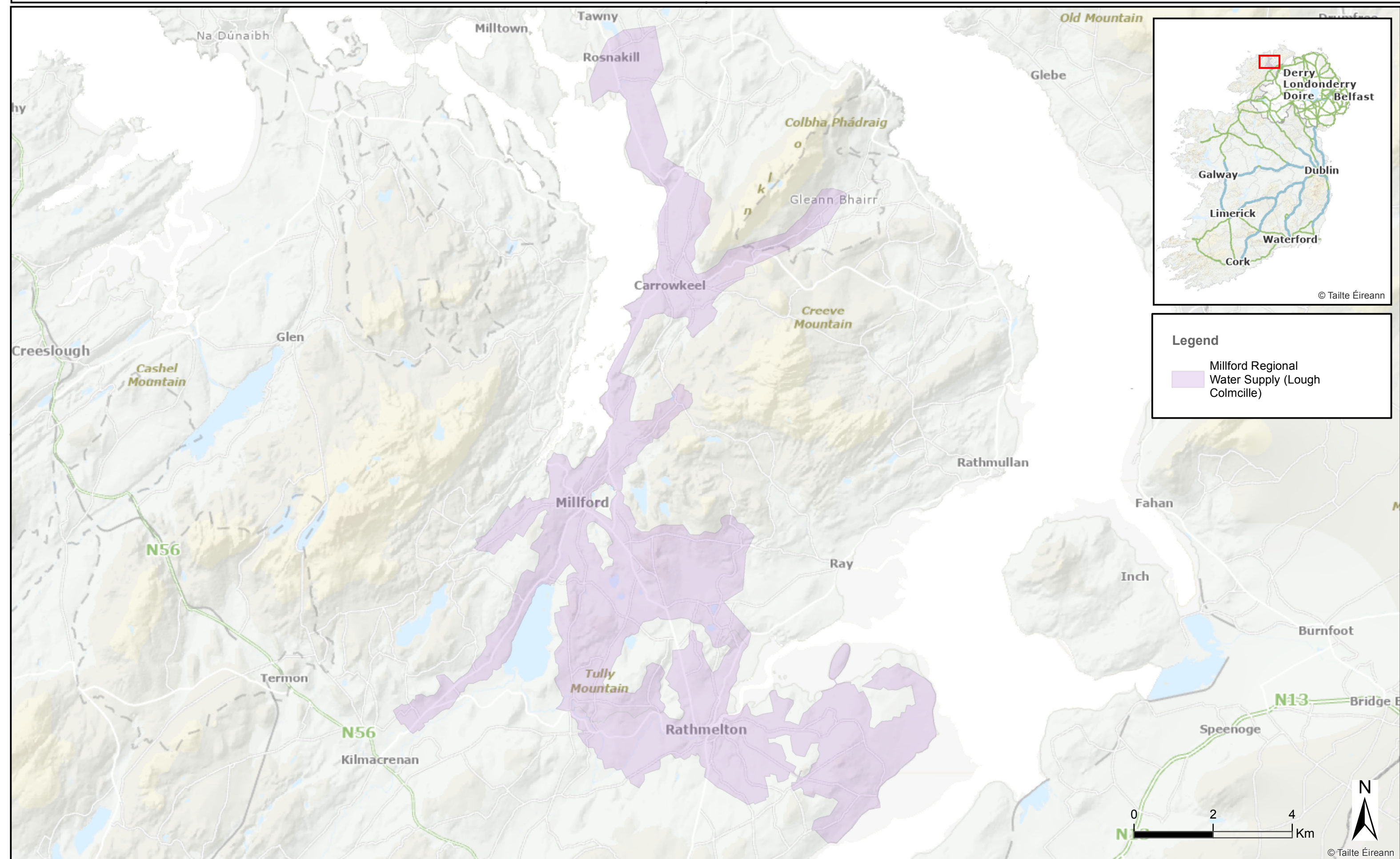
© Taitte Éireann

Appendix 2 to Uisce Éireann Order dated 21 July 2025

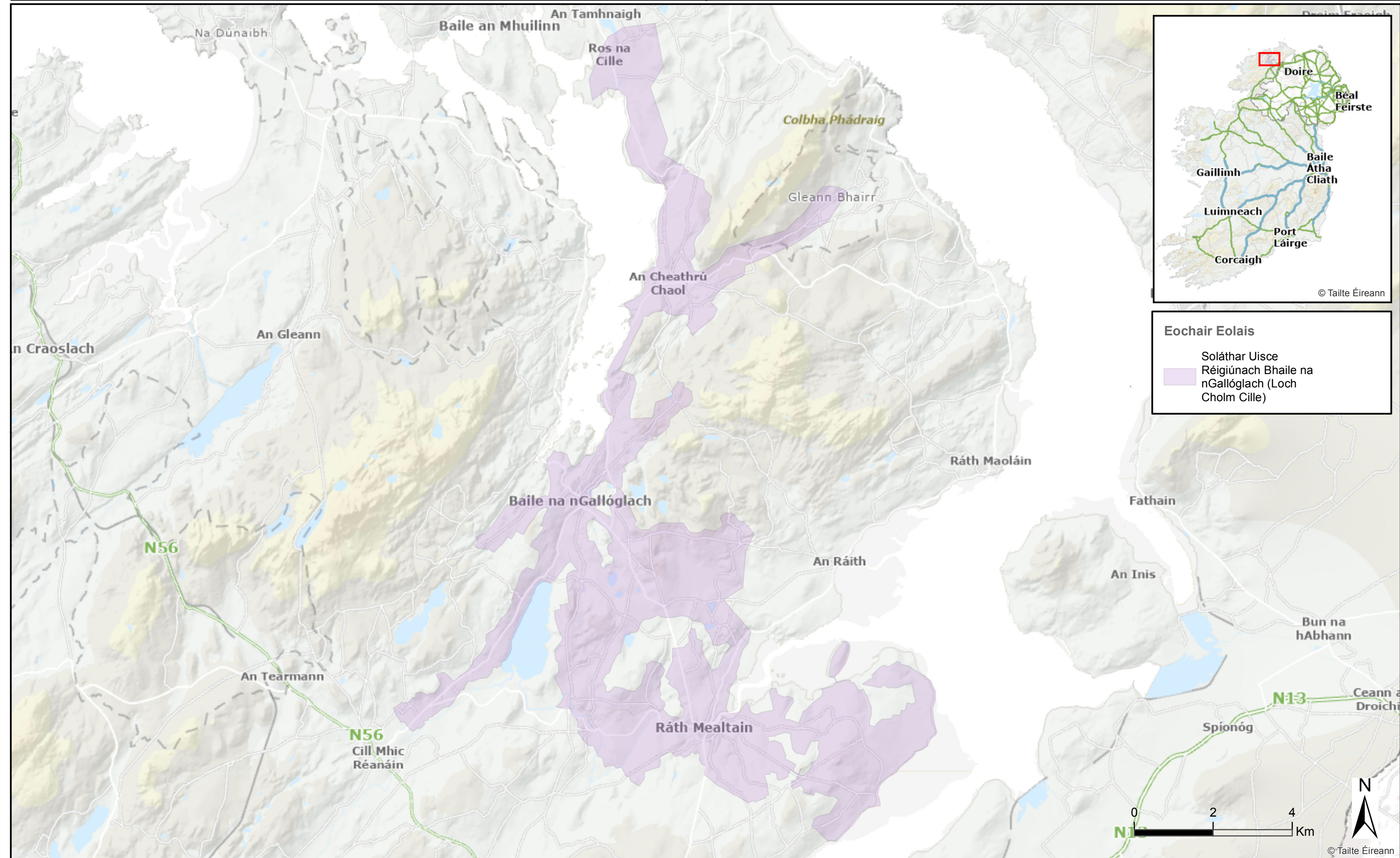
Milford Regional Water Supply (Lough Colmille)

The areas shown in purple are the areas to which this Order applies

Millford Regional Water Supply (Lough Colmcille)



Soláthar Uisce Réigiúnach Bhaile na nGallóglach (Loch Cholm Cille)

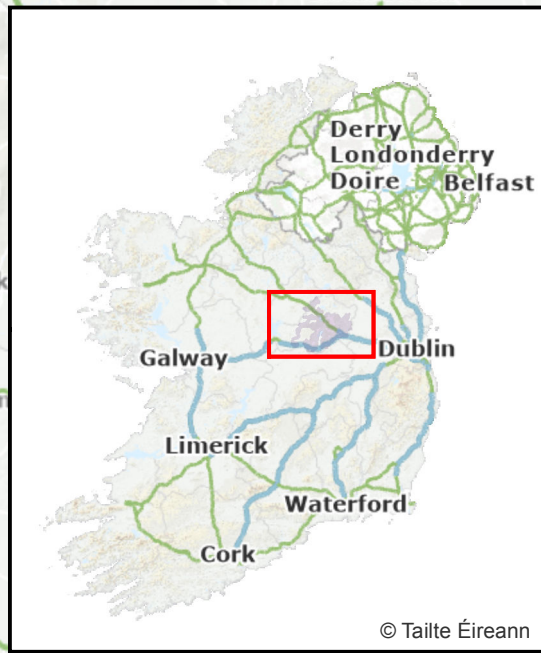
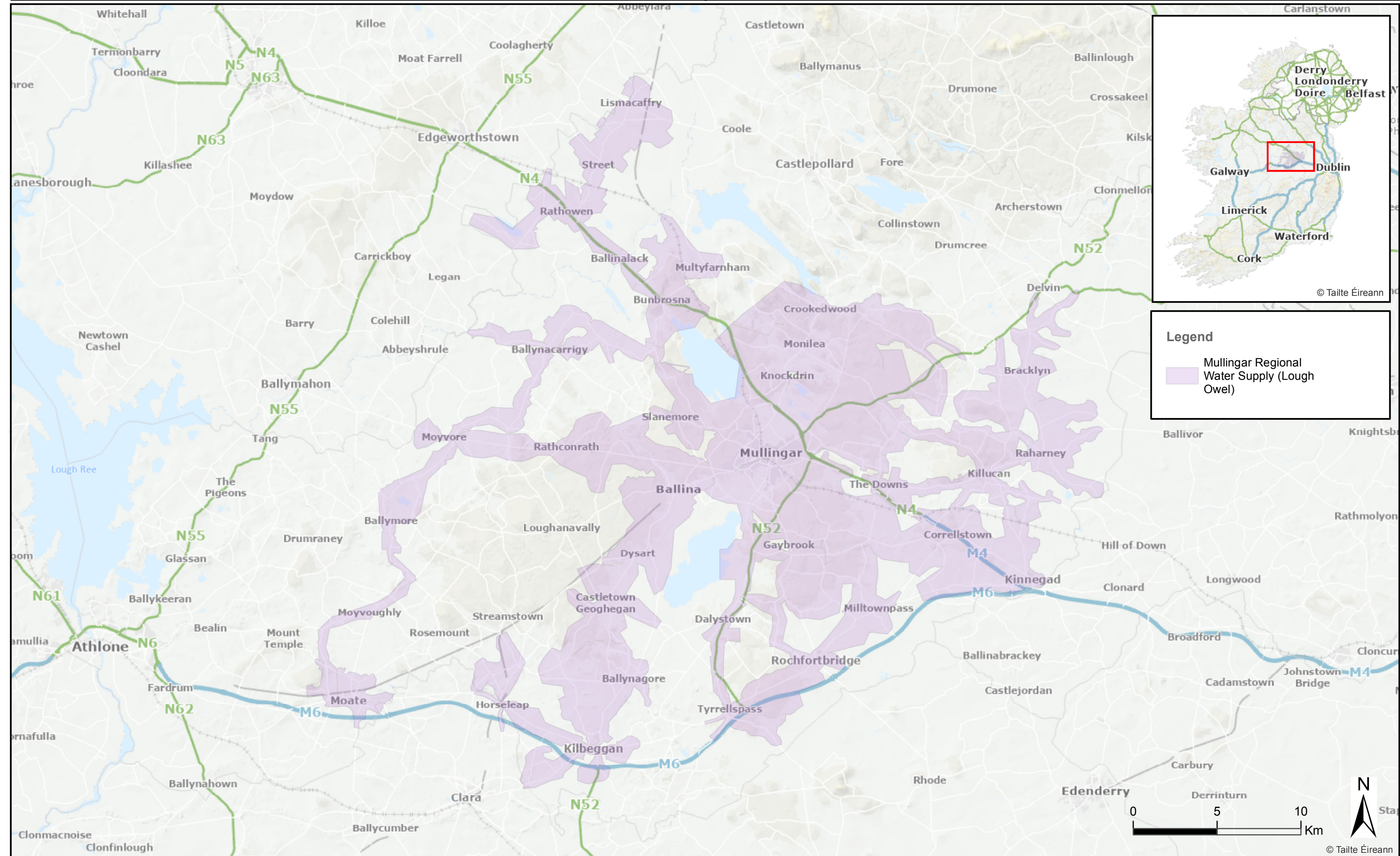


Appendix 3 to Uisce Éireann Order dated 21 July 2025

Mullingar Regional Water Supply (Lough Owel)

The areas shown in purple are the areas to which this Order applies

Mullingar Regional Water Supply (Lough Owel)



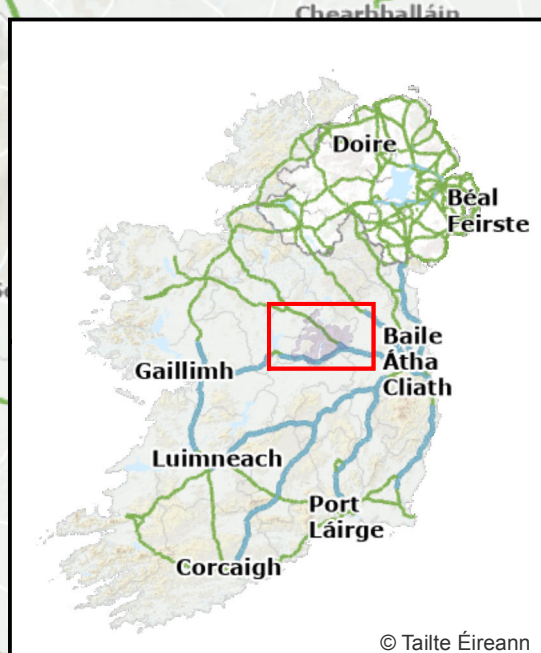
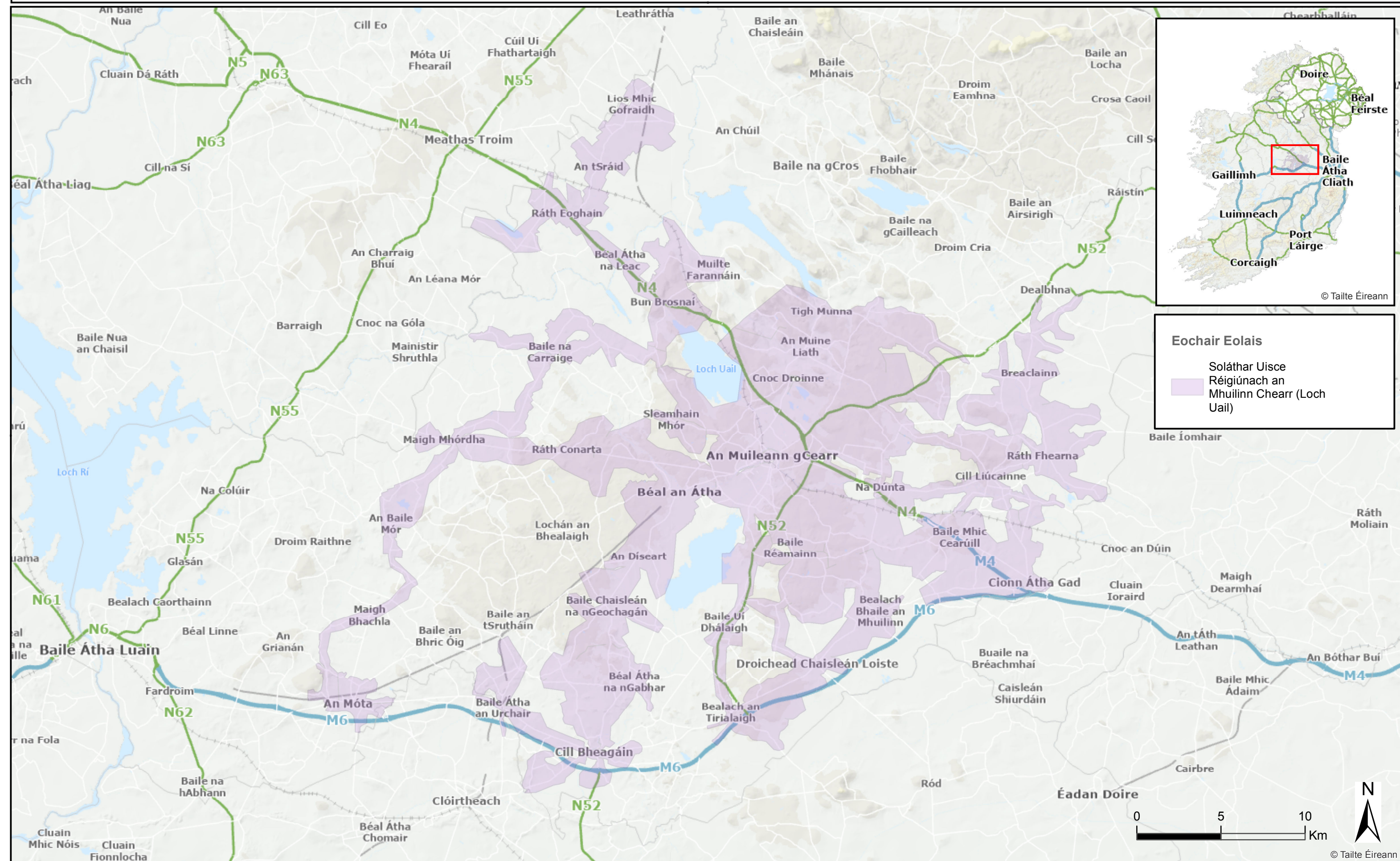
Legend

- Mullingar Regional Water Supply (Lough Owel)

© Taitte Éireann

© Taitte Éireann

Soláthar Uisce Réigiúnach an Mhuilinn Chearr (Loch Uail)



Eochair Eolais

- Soláthar Uisce
- Réigiúnach an Mhuilinn Chearr (Loch Uail)

