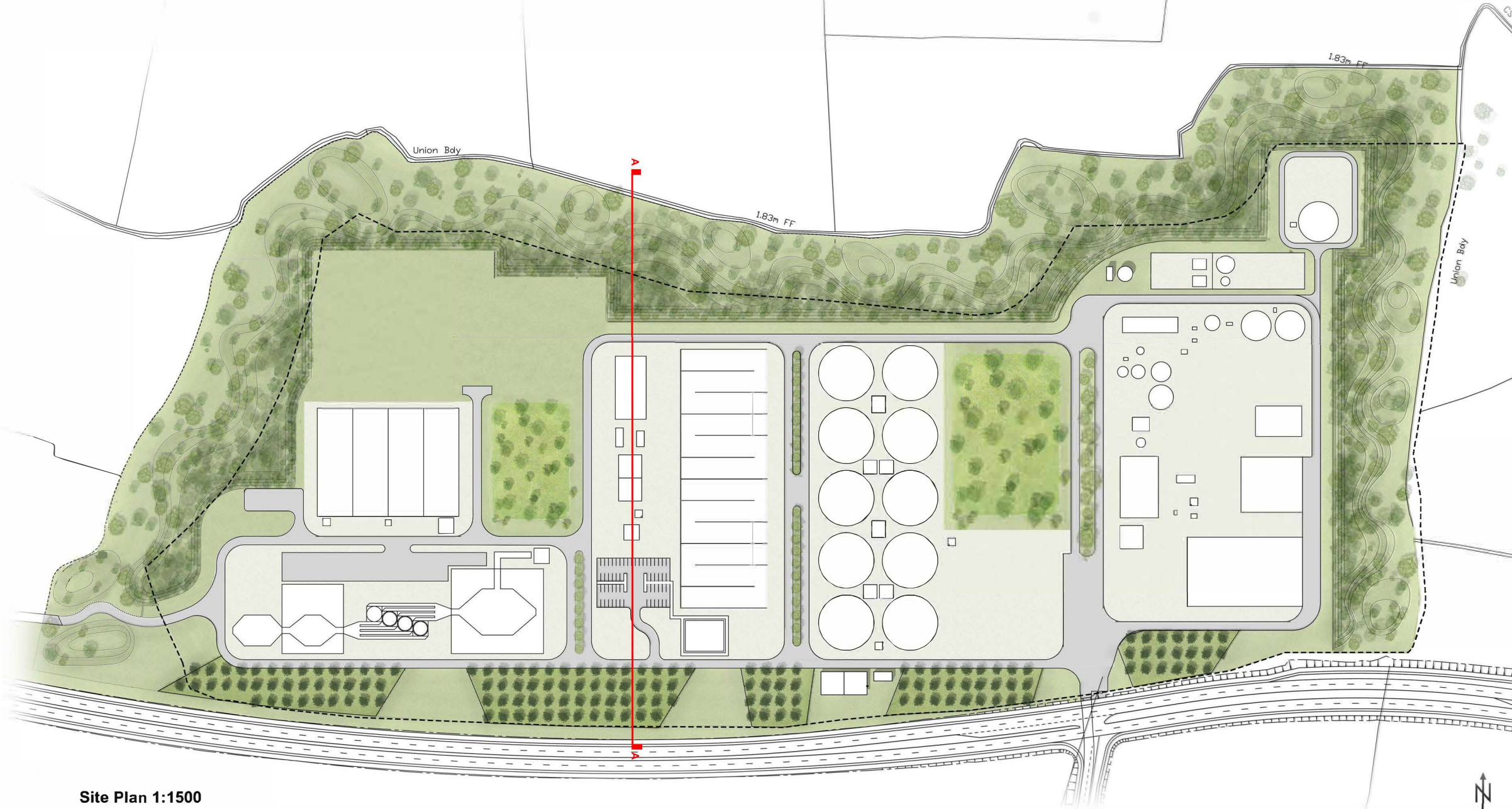


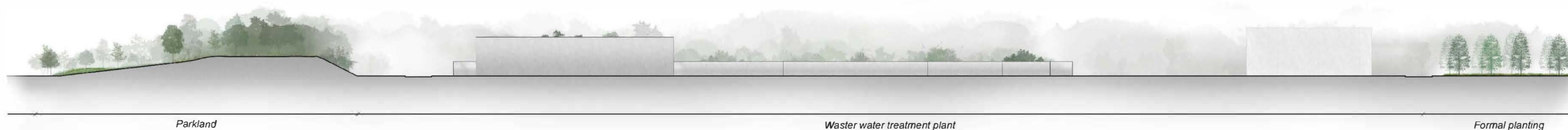
# Proposed Waste Water Treatment Plan Site

'Greater Dublin Drainage Scheme'

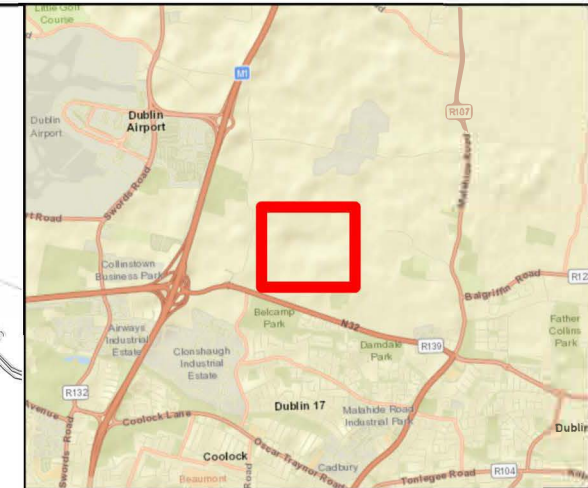
## Landscape Mitigation Plan



Site Plan 1:1500



Section AA 1:500



### Indicative Planting Specification:

High Canopy:	Pendunculate Oak ( <i>Quercus robur</i> )
Dominants (<20%)	Scots Pine ( <i>Pinus sylvestris</i> )
Low Canopy:	Alder ( <i>Alnus glutinosa</i> )
Sub-dominants (20-25%)	Downy Birch ( <i>Betula pubescens</i> )
	Wild Cherry ( <i>Prunus avium</i> )
Understorey & Fringe:	Crab Apple ( <i>Prunus padus</i> )
High-Shrubs (20-40%)	Hawthorn ( <i>Crataegus monogyna</i> )
	Hazel ( <i>Corylus avellana</i> )
	Holly ( <i>Ilex aquifolium</i> )
Understorey & Edge:	Blackthorn ( <i>Prunus spinosa</i> )
Lower-Shrubs (15-25%)	Dog-rose ( <i>Rosa-canina</i> )
	Spindle ( <i>Euonymus europaeus</i> )

### Notes:

- 10% of total planting stock to comprise of Advanced Heavy Standards (16-18cm girth).
- 20% of total planting stock to comprise of Select Standards (10-12cm girth).
- Remaining planting stock to consist of whip planting of various sizes.
- All species will be of certified native stock and preferably from an approved supplier of the Green, Low-Carbon, Agri Environment Scheme (GLAS).



Rev	Date	Purpose of revision	CD	NH	RC	RB
0	09/06/2018	FINAL				



Client:	UISCE IRISH WATER
---------	----------------------

Project:	Greater Dublin Drainage Project
----------	---------------------------------

Drawing Title:	Figure 12.5 - Proposed Wastewater Treatment Plant Landscape Mitigation Plan
----------------	---

Drawing Status:	FINAL
-----------------	-------

Scale @A3:	1:1500	DO NOT SCALE
------------	--------	--------------

Jacobs No.:	32102902
-------------	----------

Filepath:	
-----------	--

Drawing No.:	32102902-EIAR-1205
--------------	--------------------

This drawing is not to be used in whole or in part other than for the intended purpose and project as defined on this drawing. Refer to the contract for full terms and conditions.